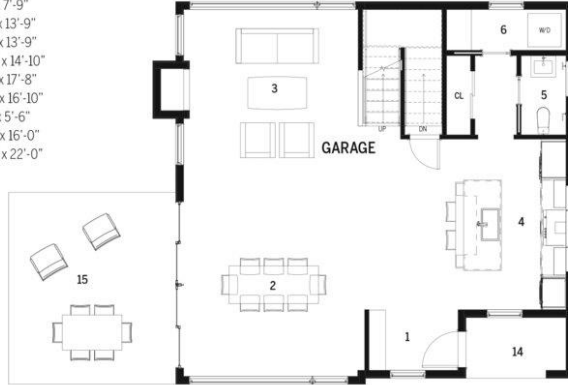


**NEUE CABIN**

1	ENTRY	8'-1" x 5'-0"
2	DINING ROOM	15'-2" x 15'-5"
3	KITCHEN	10'-2" x 14'-4"
4	LIVING ROOM	15'-2" x 15'-5"
5	HALF BATH	3'-9" x 6'-8"
6	LAUNDRY	10'-0" x 3'-5"
7	PRIMARY BATH	8'-9" x 7'-11"
8	PRIMARY BEDROOM	15'-2" x 11'-0"
9	BATH 2	6'-5" x 7'-9"
10	BEDROOM 2	14'-1" x 13'-9"
11	BEDROOM 3	10'-1" x 13'-9"
12	ACCESSORY SPACE	30'-3" x 14'-10"
12	ACCESSORY SPACE	10'-2" x 17'-8"
13	MECHANICAL ROOM	12'-3" x 16'-10"
14	PORCH	9'-0" x 5'-6"
15	PATIO	14'-0" x 16'-0"
16	GARAGE	22'-0" x 22'-0"

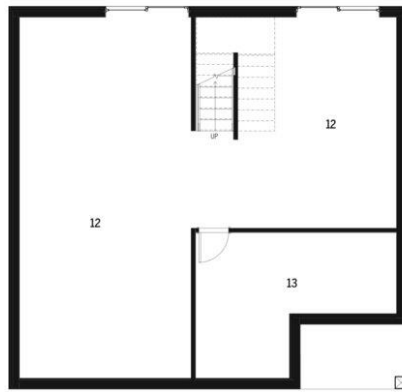
TOTAL FINISHED AREA: 1900 SF  
 FIRST FLOOR: 1025 SF  
 SECOND FLOOR: 875 SF  
 UNFINISHED BASEMENT: 1025 SF  
 GARAGE: 547 SF



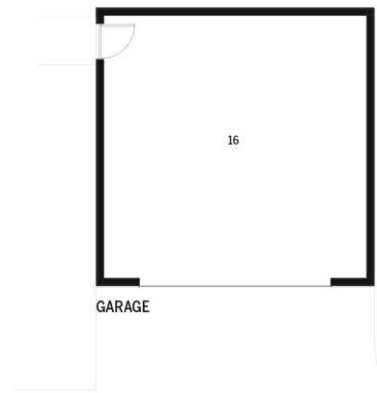
FIRST FLOOR



SECOND FLOOR



BASEMENT



GARAGE

